



# What Science Can Do: Driving Digital Transformation Across the Health Ecosystem

**Munevver Gonenc, MD**

Country President, AstraZeneca Türkiye  
June 6<sup>th</sup>, 2026



# Healthcare Systems Around the World are in Crisis



**Diagnosis**

Too late



**Prevention**

Not practiced



**Care Pathways**

Fragmented

# The Transformation of Pharma: Innovation & AI



## Accelerating Drug Discovery

Innovation and AI enable rapid identification of drug candidates, analyzing vast datasets far faster than traditional methods. This reduces the timeline from years to just months



## Enhancing Precision Medicine

Through innovative data analysis and AI, treatments can be tailored to individual patients, improving outcomes and minimizing side effects.



## Revolutionizing Diagnostics

AI-powered tools analyze medical images, genetic data, and patient histories-allowing for quicker, more accurate diagnoses and timely treatment intervention.



## Improving Success Rates

AI models predict potential failures early, allowing researchers to focus resources on the most promising compounds, thus increasing efficiency and reducing wasted investment.

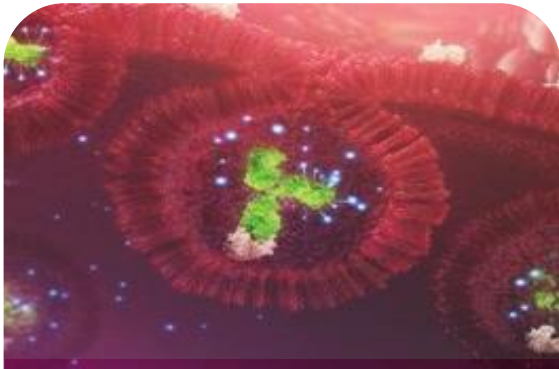


## Cost Reduction and Operational Efficiency

Automated processes and predictive analytics minimize costly manual tasks, streamline workflows, and cut R&D expenses

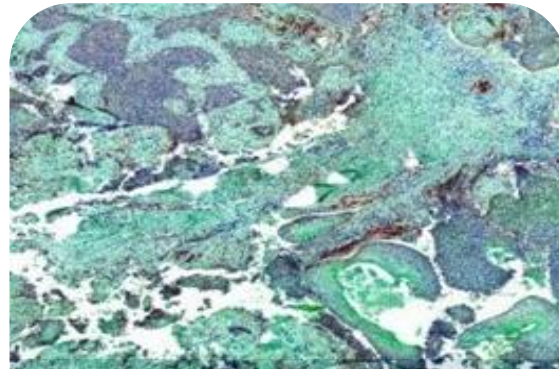


# At AstraZeneca, We Are Leading a Revolution to Transform Care



## Innovative Science

We are delivering innovative medicines across multiple scientific platforms



## Optimising Care

We are pioneering new technologies to screen and diagnose disease earlier, personalise treatment and optimise patient care



## Stakeholder Partnerships

We are accelerating our vision to transform cancer care through partnerships



## World-Class Team

We are driving progress toward our ambition with a world-class, purpose-driven team



# Turkiye has an Advanced Digital Healthcare Infrastructure



## Centralized Digital Infrastructure Components

e-Nabız (e-Pulse)

Family Medicine Information System (FMIS)

MHRS/CDAS (Centralized Appointment System)

E-prescription and PACS



## Role in Early Detection and Prevention

Predictive Modeling

Surveillance

Primary Care Integration



## Role in Personalized Care

AI-Powered Diagnostics

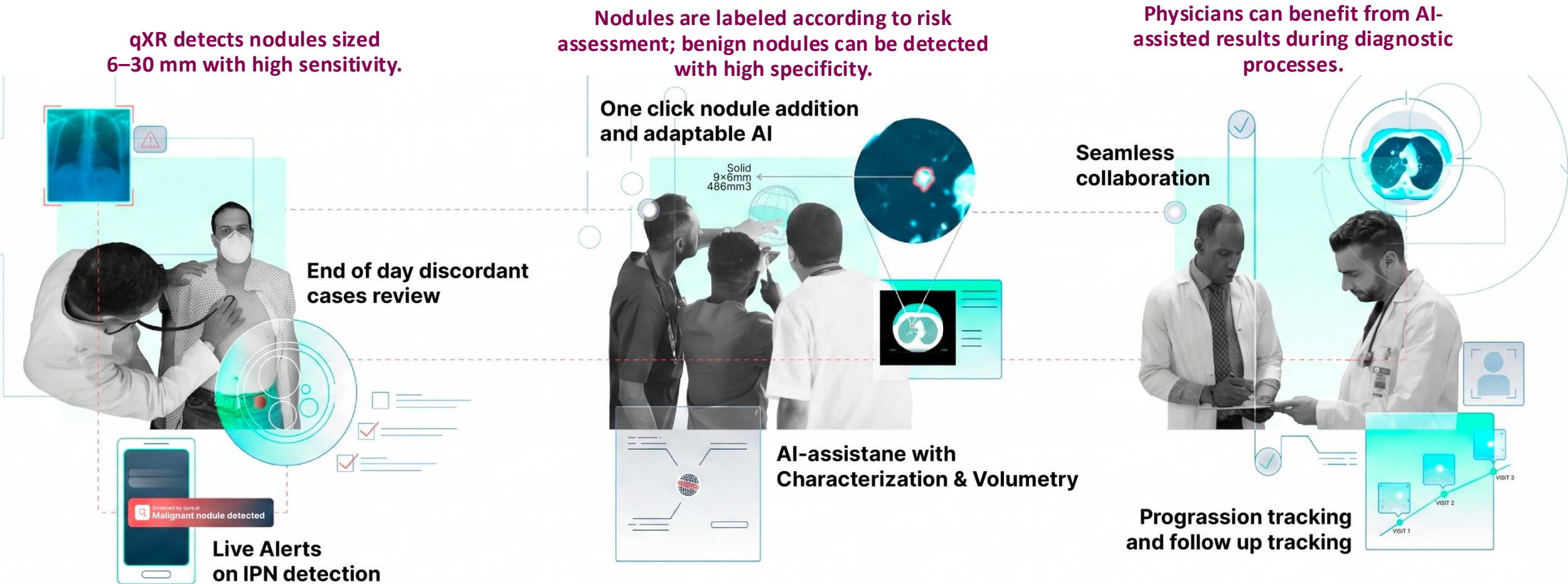
Wearable Integration

Health Literacy Action Plan (2022-2026)



# AI-Powered Prevention Model for Early Lung Cancer Detection in Turkiye

A groundbreaking collaboration between Hacettepe University and Qure AI harnesses advanced artificial intelligence and clinical expertise to address the urgent need for early detection and prevention of lung cancer in Turkiye



AI analysis of 50,000 chest X-rays resulted in the early-stage diagnosis of 6 lung cancer cases.





Thank you.